



Rowe Scientific PTY LTD

ADELAIDE - BRISBANE - HOBART - MELBOURNE - PERTH - SYDNEY

Order online at your convenience www.rowe.com.au



Proudly Australian owned and servicing the Scientific community since 1987

July - August 2014

NEWSLETTER

Client of the Month



Crocodile Gold Corporation is a Canadian gold mining company with operating mines in the Northern Territory and the state of Victoria, Australia. Crocodile Gold has a significant and prospective land package in the Northern Territory and the State of Victoria in excess of 4,000 square kilometres.

The company continues to explore in the Fosterville region to build a future for its employees, shareholders and the community. Victoria's largest gold producer- Fosterville Gold Mine has celebrated the production of 750,000 ounces of gold from the sulphide operation since production started in 2004.

Winners are chosen by our computer on a random basis. The prize is the client's choice of \$100 worth of laboratory items from a supplied list.

Clever Person Quiz

Q: Which plant hormone is a gas?

Did you Know?

(Answer to last edition's clever person quiz)

Q: A sample of an organic crystalline material is dissolved in water and it is found that the solution causes a plane of polarized light to change in orientation. Is the sample more likely to be naturally or synthetically produced?

A: Naturally produced. The optical effect is due to the sample being composed of one form of a chiral molecule as would be produced by an enzyme. When a molecule having an asymmetric carbon is chemically synthesized, the non-biological reaction usually produces an equimolar mixture of both chiral forms, with equal and opposite optical rotations that cancel each other out.

Saying of the Month

"There is a single light of science, and to brighten it anywhere is to brighten it everywhere."

~ Issac Asimov

UPCOMING EXHIBITIONS

Come and meet the Rowe Scientific team at these upcoming exhibitions:

IWAG - SA - 1 August - BioSA Conference Centre

CBSM - WA - 29 August Stand #4 - University Club UWA

WIOA - VIC - 3-4 September - Stand #147 - Bendigo Exhibition Cntr

AIOH - VIC - 29 Nov - 3 Dec Stand #27 - Pullman Melbourne

RACI R&D Topics Conference - SA - 13-15 Dec Flinders University

Did you see us at FOODPRO 2014



Rowe Scientific Pty Ltd were pleased to meet many clients and potentially new clients, and together with Angelina Tan from Velp Scientifica showcased some of the latest laboratory equipment. The event was held at the Melbourne Convention Centre and was well attended.

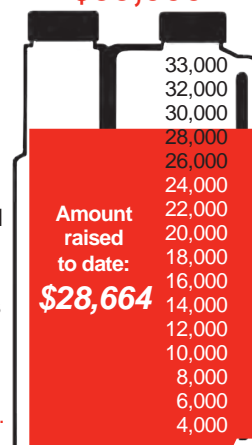
PROUDLY SUPPORTING THE ROYAL FLYING DOCTOR SERVICE OF AUSTRALIA



Your purchases of Quantumclean, and pH buffers in the unique Rowe twin head bottles, will result in \$2 per item being sent to the RFDS to support this great Australian institution.

Rowe Codes:
Quantumclean CQ1050, CQ1000, CQ1100.
pH Buffers CB3515, CB3115, CB2660

2014 TARGET
\$33,000



Jenway 6305 UV/Visible Spectrophotometer

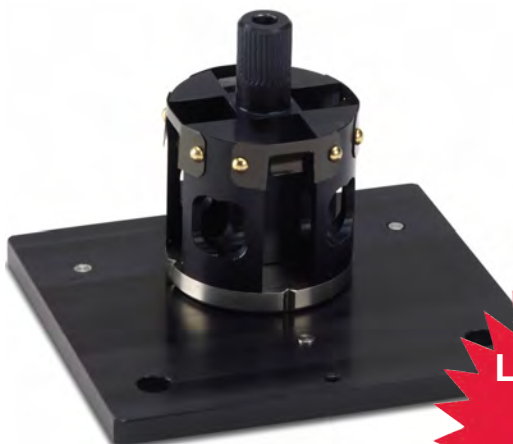
Key Features

- Wavelength range of 198 to 1000nm
- Xenon lamp
- Easy and intuitive operation
- Absorbance, %T and concentration modes
- Multi-parameter display with wavelength and photometric readouts
- Wide range of sampling accessories
- 3 year warranty



IS3160

List Price
~~\$6,416~~
Special Offer
\$4,995



IS3162

List Price
~~\$1,280~~
Special Offer
\$763

IS3160

UV/Visible Spectrophotometer

The 6305 is ideal for applications similar to the 6300 requiring measurements in the UV and visible wavelength ranges. Using a single, pulsed xenon lamp the 6305 offers an extended lamp life and high energy throughput in the UV and visible regions.

Technical Specification

Wavelength

Range	198 to 1000nm
Resolution	1nm
Accuracy	±2nm
Spectral bandwidth	8nm, 6nm over UV range

Photometrics

Transmittance	0 to 199.9%T
Absorbance	-0.300 to 1.999A
Accuracy	±1%T
Resolution	0.1%T, 0.001A
Stray light	<0.5%T at 220 and 340nm
Noise	<0.001A at 0A at 400nm
Stability	<0.002A/h after 30 minutes

Concentration

Range	-300 to 1999
Resolution	0.1 to 1
Units	ppm, mg/l, g/l, M, %, blank
Factor	0 to 199.9, 1000 to 9999

Other

Light source	Xenon lamp
Outputs	Analogue and RS232
Power	<50W*
Size (w x d x h), mm	365 x 272 x 160
Weight, kg	6

To increase productivity we can offer a four position rotary cuvette holder to accommodate various sample volumes. There are also a wide range of accessories available including an adjustable cuvette holder which can hold cuvettes between 10 and 100mm; a test tube holder for test tubes with diameters between 16 and 24mm; and for small sample volumes there is a micro-cuvette holder with a reduced aperture.

More Information Required?

If you would like further information on any of the products featured in this edition, please contact your nearest Rowe Scientific Pty Ltd office.

We reserve the right to change specifications, details and descriptions without notice. Pictures are for illustrative purposes only. Prices do not include GST.

CENTURION 2014

PRO-ANALYTICAL & PRO-RESEARCH CENTRIFUGES



- ✓ Extra thick stainless steel bowl
- ✓ Best quality European brushless motor
- ✓ Multi point lid locking
- ✓ Lid lock detection
- ✓ Overspeed sensor
- ✓ New improved design
- ✓ Simple touch screen
- ✓ Sizes from microlitres to 3 litres



CODE	DESCRIPTION	RPM	G MAX	CAPACITY	RRP	SPECIAL
IC4181	PRO-RESEARCH REFRIGERATED -9 TO +40°C PID	500-15000	22,000	3L	\$14,657	\$10,859

Get 10% off all rotors, buckets and adaptors when purchased together with a new centrifuge



Contact your local office for more information on these offers.

Prices do not include GST and only while stock lasts. We reserve the right to change specifications, details and descriptions without notice. Pictures for illustrative purposes only. Discounts do not apply to service, freight and or repair charges.

**GREAT PRICES
ON ALL
GLASSWARE
FOR YOUR
LABORATORY**

Beakers
Flasks
Lab Bottles
Dessicators



CALL YOUR LOCAL ROWE SCIENTIFIC OFFICE TO GET A QUOTE ON YOUR NEXT GLASSWARE ORDER

ALL PRICES DO NOT INCLUDE GST AND ONLY WHILE STOCKS LAST

Dear Clients,
Greetings from the South Australian office.

By the time you receive this, the 2013/14 financial year will have come to a close and I would like to take the time to thank all of you for your support and hope we can look forward to your continued support for the 2014/15 year ahead.

Another vintage is done and dusted and it brought many of our clients some challenges with excessive heat and then some heavy summer rainfalls. I was also lucky enough to tour the Hunter Valley in NSW with Kendall Parsons, so to any of the NSW clients that may recognise the name, it was great to meet all of you.

I would like to also remind you we are the official distributor for Hach who make a fantastic range of water analysis products and Contherm who have a vast range of ovens, incubators and chambers to suit any application. Please contact our office for more information.

All the best from,
Doug, Steve, Kate, Mark, Michael, Daniel, Paula and Lee.



Doug McPhee
Adelaide

ADELAIDE

Lot 7, 41-47 O'Sullivan
Beach Road
Lonsdale, SA 5160
Ph: +61 (08) 8186 0523
Fax: +61 (08) 8186 0524
rowesa@rowe.com.au

Dear Clients,
Business, like the weather, continues to be brisk and we thank you for your continued support.

Some of our staff have been busy attending overseas exhibitions to keep abreast of developing technologies and to source the latest releases of laboratory equipment.

As a result, one of the new product ranges we can now offer is Centurion High Speed Pro-Analytical Centrifuges in a variety of models for a range of applications.

Please call our sales team for information or to organise a demonstration.

From the Queensland team: Yvonne, Martin, Brian, Sean, Josephine, Leon, Sean, John, Steve and Adam.



Yvonne Dive
Brisbane

BRISBANE

Unit 1, 30 Argon St
SummerPark, QLD 4074
Ph: +61 (07) 3376 9411
Fax: +61 (07) 3376 9455
roweqld@rowe.com.au

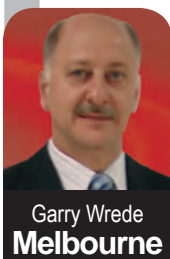
Dear Clients,

Salutations from sunny Melbourne – well that was true up to about a week ago – however, Mother Nature has “cracked her whip” and reminded us that it is winter after all...

The months of July & August will be dominated by News from us on Velp and Ratek instrumentation, as well as Ohaus Balances. These brands contribute to our core business and are consistently recognised as providing users throughout the country with both reliable and innovative solutions to everyday situations. Please take the opportunity to converse with our Victorian team as to how you can benefit.

We are still receiving post, faxes and visits via our old Hallam address – please ensure your relevant departments update your system with our new Doveton details – redirections can only last so long and we don't want to miss your contact.

Your team in Victoria,
Garry, Joe, Mango, Nic, Daniel, Adam and Brian.



Garry Wrede
Melbourne

MELBOURNE

Unit 2, 42 Green Street
Doveton, VIC 3177
Ph: +61 (03) 9701 7077
Fax: +61 (03) 9769 2560
rowevic@rowe.com.au

Dear Clients,

I would like to welcome Peter Sommers as the new CEO of Rowe Scientific Pty Ltd. Peter officially joined us on 23rd of June, after a familiarisation period earlier in the year. Like myself, he is an analytical chemist and Fellow of the RACI. After his first 5 years with CSIRO, he has spent the last 27 years with Merck Millipore. This means that he will be able to bring many years of product knowledge and expertise to looking after our clients.

As part of my succession planning, I will smoothly transition Peter into his new role as CEO with us over the next 6 months, after which I'll move full time into the role of MD and director of the Rowe Scientific Foundation. As advised previously, the Rowe Scientific Foundation will become the owner of Rowe Scientific Pty Ltd and will effectively be a cooperative of Australian laboratory people, with a charter to support Australian scientific research and education.

Thank you for your support throughout the last financial year and we look forward to a strong 2014/15, a new federal senate, and summer.

Reg Rowe and staff.



Reg Rowe
Perth

PERTH

11 Challenge Bvd
Wangara WA 6065
Ph: +61 (08) 9302 1911
Fax: +61 (08) 9302 1905
rowewa@rowe.com.au

Dear Clients,

With winter in full swing, the current cold temperatures in NSW are certainly having a 'rug up' effect on staff and clients both. At the end of June, I travelled around the NSW country side and outback (Cobar, Bourke and Nyngan) to visit our mining and industrial clients. It was great to catch up with everyone and hand out some well needed Rowe Scientific beanies.

Also in June, our Ken Valix attended the University of Wollongong trade day. He displayed and demonstrated to students and university staff our range of laboratory equipment and consumables from Velp Scientifica, Ratek, TPS, Endecott's and Macherey Nagel to name a few.

All the Best from the NSW Team,
Troy, Kendall, Ken, Adam and Rodney



Troy Boland
Sydney

SYDNEY

Unit 1, 12 Essex Street
Minto, NSW 2566
Ph: +61 (02) 9603 1205
Fax: +61 (02) 9603 1084
rowensw@rowe.com.au