



A 100% Australian owned company supplying scientific laboratories throughout Australia and overseas since 1987.



## EOFY SALE PACKAGE

### ROTATOR MULTI-BIO RS-24

With PRS-26 platform and power adapter **ROWE CODE IR0390**

**WAS \$858.52 NOW \$735**

### ACCESSORIES

**PLATFORM PRS-5/12** - For use with RS-24 MULTI-BIO ROTATOR

Fits 5 x 30mm DIA tubes or 12 x 15mm DIA tubes **ROWE CODE IA0372**

**WAS \$148 NOW \$130**

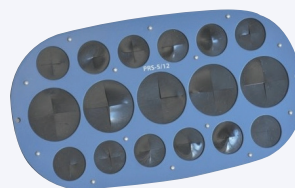
**PLATFORM PRSC-10** - For use with RS-24 MULTI-BIO ROTATOR

Fits 10 x 50mL (20 - 30mm DIA tubes) **ROWE CODE IA0373**

**WAS \$148 NOW \$130**



**ROWE CODE IR0390**



**ROWE CODE IA0372**



**ROWE CODE IA0373**



**TOTAL PACKAGE \$995 WAS \$1154.52**

## AUSTRALIANS in SCIENCE

### Sir Frank Macfarlane Burnet

OM AK KBE FAA FRS Nobel Laureate

Made a seminal contribution to modern virology, immunology and microbiology. At a time when many of his contemporaries were compelled to pursue opportunities overseas, Burnet was celebrated as the first Australian scientist to win a Nobel Prize (in Physiology or Medicine) for work undertaken in Australia. He and Sir Peter Medawar were jointly awarded in 1960 for their discovery of acquired immunological tolerance.

Source: Australian Academy of Science



- ✓ One stop shop
- ✓ 100% Australian
- ✓ Online ordering
- ✓ Phone ordering
- ✓ Account Managers
- ✓ Leading brands
- ✓ Chemicals
- ✓ Consumables
- ✓ Equipment



Quality Endorsed Company  
ISO 9001:2015  
SAI Global

**DISCOVER LEADING BRANDS AT ROWE SCIENTIFIC PTY LTD.**



Offer pricing expires  
30 Sept 2025 or until stocks  
last and is subject to GST.

**[www.rowe.com.au](http://www.rowe.com.au)**

**Page 2-3  
Laboratory Products**

**Page 6-8  
CITOTEST Microscopy**

LABORATORY PRODUCTS	PRICE	ROWE CODE
<b>BOSSHEAD</b>		
<b>RIGHT ANGLE</b> - Accepts rods to 16mm, premium quality powder coated zinc alloy with stainless steel thumb screws	\$8.72	HB0387
<b>BURETTE</b>		
<b>CLAMP</b> - Single-place, polypropylene, spring-loaded, suits 10 - 12.5mm diameter retort rod	\$8.00	PB0677
<b>SCHELLBACH</b> - 10mL, 'A' class, blue graduations, PTFE stopcock, borosilicate glass, includes works certificate	\$51.64	GB0521
<b>DR SCHILLING</b> - 25mL, 'A' class, complete with 500mL plastic bottle, screw cap and plastic foot	\$56.16	GB0519
<b>SCHELLBACH</b> - 25mL, 'A' class, blue graduations, PTFE stopcock, borosilicate glass, includes works certificate	\$51.75	GB0522
<b>DR SCHILLING</b> - 50mL, 'A' class, complete with 500mL plastic bottle, screw cap and plastic foot	\$65.11	GB0520
<b>SCHELLBACH</b> - 50mL, 'A' class, blue graduations, PTFE stopcock, borosilicate glass	\$33.70	GB0523
<b>SCHELLBACH</b> - 50mL, 'A' class, blue graduations, PTFE stopcock, borosilicate glass, includes works certificate	\$52.79	GB0524
<b>ROUND BOTTOM FLASK</b>		
5mL, 14/23 socket, single neck	\$5.57	GF0620
10mL, 14/23 socket, single neck	\$24.50	GF0471
25mL, 14/23 socket, single neck	\$10.88	GF0472
50mL, 19/26 socket, single neck	\$12.38	GF0474
50mL, two neck, centre neck 19/26, side neck 14/23	\$15.53	GF0619
100mL, 19/26 neck, borosilicate glass	\$11.36	GF0582
100mL, 24/29 short neck (approx 110mm high)	\$11.39	GF0578
100mL, two neck, centre neck 24/29, side neck 14/23	\$22.98	GF0615
250mL, 19/26 neck, borosilicate glass	\$15.27	GF0583
250mL, 24/29 socket, single neck	\$15.27	GF0581
250mL, two neck, centre neck 24/29, side neck 14/23	\$28.93	GF0616
500mL, 24/29 socket, single neck	\$17.20	GF0617
500mL, two neck, centre neck 24/29, side neck 14/23	\$31.88	GF0618
1000mL, 24/29 socket, single neck	\$35.70	GF0489



ROWE CODE  
HB0387



ROWE CODE  
GB0520



ROWE CODE  
GB0524



ROWE CODE  
GF0474



ROWE CODE  
GF0616



A 100% Australian owned  
company since 1987.

ISSUE 22. JUNE 2025

ROWE SCIENTIFIC PTY LTD

**LABLIKES**

LABORATORY PRODUCTS	PRICE	ROWE CODE
<b>LABORATORY JACK</b>		
Aluminium platform 150 x 150mm, elevation 260mm (holds 25kg)	\$154.44	HJ0014
Powder coated steel platform 150 x 135mm, elevation 50 - 250mm (holds 25kg)	\$146.61	HJ0013
Powder coated steel platform 200 x 200mm, elevation 64 - 260mm plate (holds 25kg)	\$177.80	HJ0015
Stainless steel platform 145 x 75mm, elevation 45 - 150mm (holds 15kg)	\$352.43	HJ0007
<b>METALWARE SET</b>		
Base 200 x 125mm (1200g), rod 600mm, bosshead, 3 prong PVC coated clamp and swivel bosshead, retort ring 75mmOD	\$99.50	HM0276
Base 200 x 125mm (800g), rod 600mm, bosshead, 4 prong corklined clamp, retort ring 75mmOD	\$80.14	HM0275
<b>RETORT CLAMP</b>		
2-prong vinyl coated clamp, opens to 105mm on a 140 x 10mm stainless steel rod	\$22.46	HR0236
Retort clamp 4-prong cork lined clamp, opens to 104mm on a 140 x 10mm stainless steel rod	\$20.90	HR0232
Retort clamp 4-prong cork lined clamp, opens to 104mm, with swivel bosshead	\$28.11	HR0233
Retort clamp 4-prong vinyl coated clamp, opens to 104mm on a 140 x 10mm stainless steel rod	\$23.41	HR0234
Retort clamp 4-prong vinyl coated clamp, opens to 104mm, with swivel bosshead	\$30.24	HR0235
<b>RETORT STAND</b>		
150 x 100mm side support base with 490mm stainless steel rod	\$44.31	HR0237
200 x 130mm side support base with 490mm stainless steel rod	\$56.78	HR0238
230 x 150mm side support base with 610mm stainless steel rod	\$65.53	HR0239
280 x 150mm side support base with 900mm stainless steel rod	\$102.95	HR0240
220mm 'A' shape base with 600mm stainless steel rod	\$68.31	HR0241



ROWE CODE  
HJ0013



ROWE CODE  
HM0276



ROWE CODE  
HR0232



ROWE CODE  
HR0239

**Contact your local Rowe Scientific Account Manager to find out more.**



# Solutions for PFAS analysis

## The special HPLC columns: NUCLEODUR® PFAS and NUCLEODUR® PFAS Delay

NUCLEODUR® PFAS HPLC columns are the perfect choice for analysing PFAS substances. These columns show a high batch-to-batch reproducibility, are specially batch tested for PFAS analyses and are very well suited for LC-MS due to low bleeding characteristics.

The NUCLEODUR® PFAS Delay column provides high retention for PFAS compounds and are used to retain PFAS contaminants from the HPLC system, which could otherwise falsify the sample to be analysed. For this purpose, the NUCLEODUR® PFAS Delay column is connected in flow direction between the mixing vessel and the sample injector.

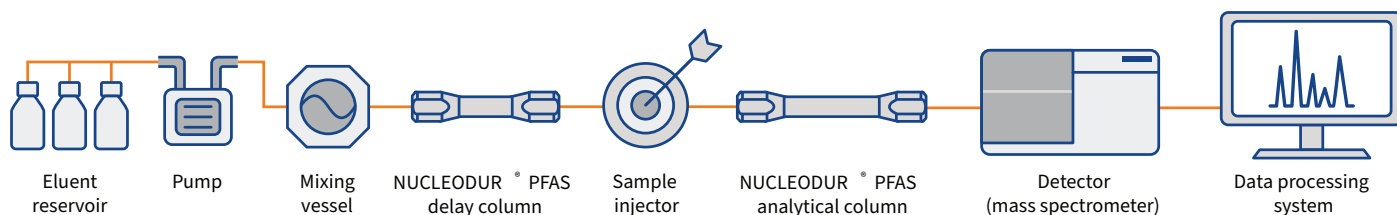
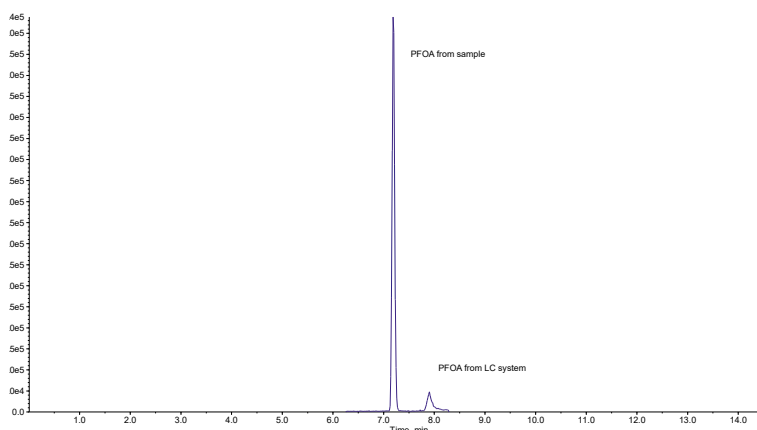


Illustration of installation and usage of NUCLEODUR® PFAS Delay column



NUCLEODUR® PFAS analytical HPLC column

### Good to know

The prevalence of PFOA is commonly observed as an instrument materials contaminant.

The following figure shows the benefits of using a delay column 50 x 2mm NUCLEODUR® PFAS Delay in combination with a 100 x 2mm NUCLEODUR® PFAS analytical column.

## SPE product solutions – CHROMABOND® HR-X and HR-XAW

According to DIN 38407-42, EPA 537.1 and 533 guidelines, MACHEREY-NAGEL also offers further SPE product solutions for the enrichment of PFAS:

- CHROMABOND® HR-X: hydrophobic PS / DVB copolymer
- CHROMABOND® HR-XAW: weak mixed mode anion exchanger (WAX) PS / DVB copolymer

These allow outstanding recovery rates and high reproducibility.

## PFAS in food using QuEChERS extraction and clean-up method

QuEChERS ("Quick, Easy, Cheap, Effective, Rugged and Safe") sample preparation products from MACHEREY-NAGEL ensure a time efficient and simple extraction of PFAS from food and a subsequent solid phase extraction for further sample clean-up according to procedure C-010.02 developed by the US Food and Drug Administration (FDA) for the measurement of 16 PFAS in food.

dSPE columns, CHROMABOND® QuEChERS Mix XII, 15 mL centrifuge tubes, CHROMABOND® QuEChERS Mix XX, 2 mL centrifuge tubes

## Plastic vials and fluorine-free closures for PFAS analysis

When you are doing PFAS analysis, it is crucial to select the right vials and closures for this application. Adsorption effects of glass, as well as possible contamination of the sample by particles from the septa, especially from the PTFE lamination, may put your analysis results at risk.

MACHEREY-NAGEL offers polypropylene screw neck vials N 9 and snap ring vials N 11, as well as appropriate closures with a silicone/polyimide and silicone/polypropylene septa respectively, which – in contrast to PTFE laminated liners – are fluorine-free.

### Good to know

There are CHROMABOND® QuEChERS mixes available that are especially suitable for sample preparation of PFAS in:

- Dairy products
- Bread
- Lettuce
- Fish



MN MACHEREY-NAGEL



# PLAS-LABS DESICCATOR CABINETS

## DESCRIPTION

## ROWE CODE

MODEL 860.5-CG

**300 x 300 x 150mm**

Clear acrylic with 2 shelves

PD0086



MODEL 860-CG

**300 x 300 x 300mm**

Clear acrylic with 2 shelves  
(Additional shelves available)

PD0088



MODEL 861-CG

**300 x 300 x 600mm**

Clear acrylic with 4 shelves

PD0084



MODEL 861-CGA

**300 x 300 x 600mm**

Amber acrylic with 2 shelves

PD0108



MODEL 862-CG

**450 x 450 x 450mm**

Clear acrylic with 4 shelves

PD0092



## FEATURES AND BENEFITS

### AIR-TIGHT GASKETS

Prevents unwanted air into the desiccator

### ALL SHELVES ARE PERFORATED

For optimum air circulation

### ANTI-TIPPING DESIGN

Allows shelves to protrude from the desiccator without tipping over

### SPRING LOADED SEALING CLAMPS

For uniform locking tension and easy opening

### EACH CUBICAL HAS ITS OWN HYGROMETER

For moisture level indication

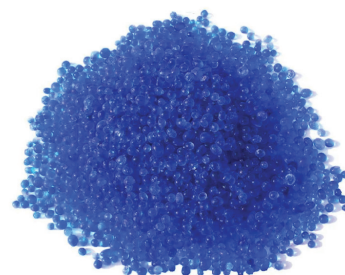
### EACH UNIT HAS NYLON FITTINGS

For gas purging

### DOOR GUARDS

To prevent warping and possible loss of internal atmosphere

**AVAILABLE IN CLEAR, AMBER  
OR BLACK ACRYLIC**



**RECEIVE FREE  
SILICA GEL BLUE SELF  
INDICATING GRANULES**

• 2-4mm, 5-10 mesh • 5kg

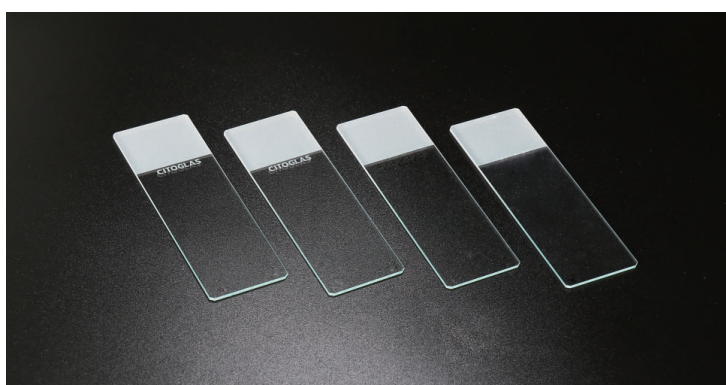
**VALUED AT \$212.86**

with the purchase of any  
Plas-Labs Desiccator

**ROWE CODE CS7465**

PLAS ■ LABS

MICROSCOPE SLIDES	QTY	ROWE CODE
Super grade, frosted 1 end 1 side, ground edges, 45° clipped corners, 75 x 25 x 1.1mm	50	EM0106
Super grade, white colour frosted 1 end 1 side, ground edges, 90° corners, 75 x 25 x 1.1mm, printable (similar to printaid microscope slides)	50	EM0114
Super grade, plain, ground edges, 45° clipped corners, 75 x 25 x 1.1mm	50	GM0006
Super grade, plain, ground edges, 90° corners, 75 x 25 x 1.1mm	50	EM0076
Standard grade, plain, ground edges, 90° corners, 75 x 25 x 1mm	50	EM0224



MICROSCOPE COVER SLIPS	QTY	ROWE CODE
• INDIVIDUALLY WRAPPED IN ALUMINIUM VACUUM PACK WITH DESICCANT • HINGED LID BOX		
22 x 22mm, #1 thickness, super white glass	200	GM2305
22 x 22mm, #1.5 thickness, superwhite glass, 0.16 - 0.19mm thick	200	EM0170
22 x 32mm, #1.5 thickness, soda lime glass	100	EC0016
22 x 22mm, #1 thickness, Borosilicate 3.3 glass, suitable for manual and automatic workflow	200	EM0116
22 x 32mm, #1.5 thickness, Borosilicate 3.3 glass, suitable for manual and automatic workflow	100	EC0015
22 x 40mm, #1 thickness, Borosilicate 3.3 glass, suitable for manual and automatic workflow	100	EM0118
22 x 50mm, #1 thickness, Borosilicate 3.3 glass, suitable for manual and automatic workflow	100	EM0119

**CITOTEST®**

***If you don't see what you need, please call us!***





MICROSCOPE SLIDE STORAGE BOXES		ROWE CODE
<ul style="list-style-type: none"> <li>• Holds both 75 x 25mm and 76 x 26mm slides</li> <li>• ABS Material</li> <li>• Water-proof index card mounted inside lid</li> <li>• Cork sheet on the bottom protects slides</li> <li>• Each</li> </ul>	50 place, red, snap closure	PS0381
	50 place, blue, snap closure	PS0380
	50 place, grey, snap closure	PS0202
	100 place, orange, snap closure	EM0232
	100 place, white, snap closure	EM0234
	100 place, red, snap closure	PM4060
	100 place, metallic grey, snap closure	EM0235
	100 place, blue, snap closure	EM0233
	100 place, grey, snap closure	EM0231
	100 place, grey, steel lock	PM4056
	100 place, red, steel lock	PM4058
	100 place, blue, steel lock	PM4055
	100 place, orange, steel lock	PM4057
	100 place, white, steel lock	PM4059



ROWE CODE  
PS0201



ROWE CODE  
PS0178 & PS0177

MICROSCOPE SLIDE MAILER	QTY	ROWE CODE
Holds 1 (25 x 75mm) slides, horizontal type, neutral colour, polypropylene	200	PS0295
Holds 2 (25 x 75mm) slides, horizontal type, neutral colour, polypropylene	100	PS0180
Holds 2 (25 x 75mm) slides, vertical type, neutral colour, polypropylene	100	PS0307
Holds 5 (25 x 75mm) slides, neutral colour, polypropylene	10	PS0201
Holds 5 (25 x 75mm) slides, neutral colour, polypropylene	10	PS0183
Slide tray without dividers or lid, cardboard, holds 2 (25 x 75mm) slides	50	PS0200
Slide tray without dividers or lid, cardboard, holds 9 (25 x 75mm) slides	10 pcs	PS0221
Slide tray with dividers and lid, cardboard, holds 10 (25 x 75mm) slides	5 pcs	PS0178
Slide tray with dividers and lid, cardboard, holds 20 (25 x 75mm) slides	5 pcs	PS0177
Slide tray with dividers without lid, holds 20 (25 x 75mm) slides, fast-read, white, polystyrene	ea	PS0179
Slide tray with single divider to make 2 sections, each section without individual dividers, no lid, (type "E") cardboard, holds 20 (25 x 75mm) slides	50	HS0360



BASE MOULDS	QTY	ROWE CODE
30 x 24 x 9mm, stainless steel	10	HB5004
37 x 24 x 9mm, stainless steel	10	HB5003



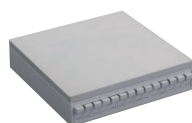
MICROSCOPE SLIDE STORAGE CABINETS (EA)	ROWE CODE
Pathology / Histology Slide Storage Cabinet Baspath - External Dim 485 x 480 x 146mm, steel with white powder coating, stackable and lockable, each unit contains 14 x 400 slide drawers, accommodating approximately 5600 slides	HP0047
Pathology / Histology Paraffin Block Storage Cabinet Baspath - External Dim 485 x 480 x 91mm, steel with white powder coating, stackable and lockable, each unit contains 14 x 65-block drawers, accommodating approximately 910 blocks	HP0048
Storage Cabinet Lid Baspath for Pathology / Histology - External Dim 485 x 480 x 26mm, steel with white powder coating	HL0084
Table Top Storage Cabinet Paraffin Block MiniPLUS - External Dim 442D x 243W x 404mmH, contains 6 x 350 piece drawers, heavy-duty walled ABS construction	PS0377
ProPath-SR Carts for Pathology / Histology samples - Dim 485L x 480W x 146mmH, short model with 4 lockable caster wheels	HP0052



ROWE CODE  
HP0047



ROWE CODE  
HP0048



ROWE CODE  
HL0084



ROWE CODE  
PS0377



MICROTOME BLADE -  
FEATHER BRAND S35  
Disposable  
ROWE CODE EM2550

FREEZER BOX	PLACES	COLOUR	ROWE CODE
<ul style="list-style-type: none"> <li>Storage for 2" tall cryotube</li> <li>Cardboard</li> <li>Ext Dim 134 x 134 x 51mm</li> <li>Each</li> </ul>	81 place (9 x 9)	WHITE*	HF0102
		ORANGE	HF0063
		BLUE	HF0173
		RED	HF0174
	100 Place (10 x 10)	GREEN	HF0085
		WHITE	HF0084

\*With two drain slots at both sides of bottom



ROWE CODE HF0102



ROWE CODE HF0173





A 100% Australian owned  
company since 1987.

ISSUE 22. JUNE 2025

ROWE SCIENTIFIC PTY LTD

**LABLIKES**

## WE NOW OFFER THE **EXTENDED RANGE** OF NULINE LABORATORY INCUBATORS

### **Australian made**

Temperature Range - Ambient +5°C to 60°C

#### FEATURES INCLUDE:

- Fan forced system
- Overheating alarm
- Safety cutoff at 70°C
- Double glazed doors
- Stainless int/ext with chrome plated shelves
- Microprocessor control
- Digital display with high temperature alarm



MODEL Li100 80L	MODEL Li260 247L	MODEL Li650 611L	MODEL Li1100 1000L
<b>NOW \$5,359</b> SAVE \$400	<b>NOW \$6,494</b> SAVE \$500	<b>NOW \$9,057</b> SAVE \$600	<b>NOW \$11,729</b> SAVE \$900
<b>ROWE CODE II0242</b>	<b>ROWE CODE II0257</b>	<b>ROWE CODE II0258</b>	<b>ROWE CODE II0259</b>



## NEW PRODUCT - VC WIPES MULTI PURPOSE DISPOSABLE WIPES

VC Wipes are a commercial grade, multi purpose wipe ideal for use in Laboratory, Medical and Industrial settings. The VC wipe is designed and manufactured using no binders, surfactants, chemicals or starches. This ensures there is minimal loose fibres or particles, leaving no residue or lint when used.

- 60 x 32cm • Material Viscose 90% Polyester 10%
- Manufactured in accordance with ISO9001 Management Systems

#### FEATURES AND BENEFITS:

- Non woven spun laced fibre
- Low extractables
- Solvent resistant
- Cloth like softness
- Non abrasive
- Autoclavable
- Highly absorbent
- Extremely low lint
- Reinforced strength

**ROWE CODE HW0031**

\*DISPENSER: 50 Wipes per Bag, 6 Bags per Carton, 2 Cartons per Shipper



**INTRODUCTORY OFFER**  
**ONLY \$200**  
**PER CASE OF 600 WIPES\***

# Now in stock for immediate delivery: **BRAND® HandyStep®** range of electronic pipettors

## HandyStep Touch 'S'

\$2,275 ROWE CODE DH0031

## Charging Stand

\$680 ROWE CODE DC0046

## HandyStep Touch

Including universal AC adaptor  
and sample pack of PD-Tips  
0.5, 1.25, 5 and 12.5mL  
(includes lithium battery).

ROWE CODE DH0002

### HandyStep® Touch S

All of the features of the HandyStep® touch with the additional functions of Sequential Dispensing, Multi-Aspiration and Titration.

**DH0002 PACKAGE OFFER**  
**FIRST 5 ORDERS RECEIVED**  
**GET \$500 OFF THE PRICE**  
**PAY ONLY \$2124 PER UNIT**

### Versatile HandyStep® touch

With the standard modes  
Multi-Dispensing,  
Auto-Dispensing,  
Pipetting and Favourites

### Easy

Automatic size  
detection of  
BRAND PD-Tips II

### Simple

Automatic tip ejection  
by the press of a button  
prevents contamination

### Long-lasting

Many hours of continuous  
operation with a single  
battery charge

### USB-C connection

For quick charging  
by cable

### Robust

High-quality materials  
provide long service life,  
while smooth surfaces make  
cleaning / disinfection easy

### STEP button

Ergonomically  
arranged STEP button,  
for effortless volume  
filling and delivery

### Efficient

In addition to BRAND  
PD-Tips, compatible third  
party tips can also be used





A 100% Australian owned  
company since 1987.

ISSUE 22. JUNE 2025

ROWE SCIENTIFIC PTY LTD

**LABLIKES**

## VOLUMETRIC FLASK 10mL

'A' class, borosilicate glass, blue graduations,  
plastic stopper, 10/19 neck

ROWE CODE GF9020

**STOCK ONLY CLEARANCE**

**PRICE \$1.80 EA**

## 12 PLACE STAINING SET

Stainless steel, 12 x 300mL PET dish and slide holder with  
handle (25 slides), 300 slide total capacity

ROWE CODE PS0494

**STOCK ONLY  
CLEARANCE  
PRICE \$299**



## SEPARATING SQUIBB FUNNEL 250mL

With PTFE Stopcock

ROWE CODE GF4607

**STOCK ONLY CLEARANCE  
PRICE \$72 EA**



## LABORATORY BOTTLE 250mL

Amber stained GL45 borosilicate glass  
(without screw cap)

ROWE CODE GB8007

**STOCK ONLY CLEARANCE  
PRICE \$22 EA**



## MEASURING CYLINDER 100mL

'A' class, tall form, spouted,  
glass with hexagonal base

ROWE CODE GC1166

**STOCK ONLY  
CLEARANCE PRICE \$14.85 EA**



Why not order online  
at your convenience  
24/7 through the  
Rowe Scientific Web  
Store, with its easy to  
use features?

Rowe Scientific Pty Ltd are a 100% Australian  
owned company which have been supplying  
laboratories across Australia since 1987 with  
scientific equipment, consumables and  
chemicals. You have the option of online  
ordering at your convenience 24 /7 through  
a secure login account we create for you.

Once you have a Rowe Scientific Pty Ltd  
account, simply go to [www.rowe.com.au](http://www.rowe.com.au)  
log-in and then you can:

- Order online with your secure login.
- See special pricing and availability.
- Order when it's convenient for you 24 /7.
- See your online order history and back orders.
- Shop from over 117,000 product lines and  
leading brands.



To obtain a Rowe Scientific login,  
go to [www.rowe.com.au](http://www.rowe.com.au) and click the  
register tab then follow the prompts.



To view our webstore as a guest go to  
**[www.rowe.com.au](http://www.rowe.com.au)**  
and explore the products tab.

To see our current special offers on our  
webstore, go to [www.rowe.com.au](http://www.rowe.com.au)  
and explore the specials tab.

Or to find out more about us including  
scholarships and news events,  
go to [www.rowe.com.au](http://www.rowe.com.au) and explore  
the news tab.





For all the laboratory  
supply needs that  
you envision.



Online, by phone or face to face, we give you the choice.  
INSTRUMENTS - CONSUMABLES - CHEMICALS - SERVICE & REPAIRS  
A 100% Australian owned company, supplying scientific laboratories since 1987.

Discover more at: **www.rowe.com.au**

**South Australia & NT**  
Ph: (08) 8186 0523  
rowesa@rowe.com.au

**Queensland**  
Ph: (07) 3376 9411  
roweqld@rowe.com.au

**Victoria & Tasmania**  
Ph: (03) 9701 7077  
rowevic@rowe.com.au

**New South Wales**  
Ph: (02) 9603 1205  
rowensw@rowe.com.au

**Western Australia**  
Ph: (08) 9302 1911  
rowewa@rowe.com.au

